

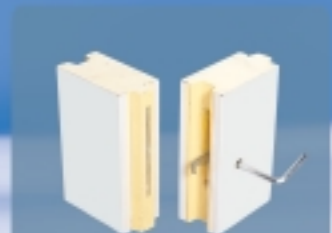
SEQUENZA DI MONTAGGIO MINICELLE - ASSEMBLY OF MINI-COLDRoomS - MONTAGE DER MINIZELLEN



Facilità di montaggio.
Il sistema MINICELLA TOP, grazie alla totale assenza di profili, garantisce un montaggio rapido anche per tecnici meno esperti.

Easy assembly.
The MINI-COLDRoom TOP system, thanks to the total lack of profiles, ensures a quick assembly even for unskilled people.

Leichte Montage.
Das MINIZELLE TOP-System, dank dem vollständigen Mangel von Profilen, versichert eine schnelle Montage, auch für unspezialisierten Leute.

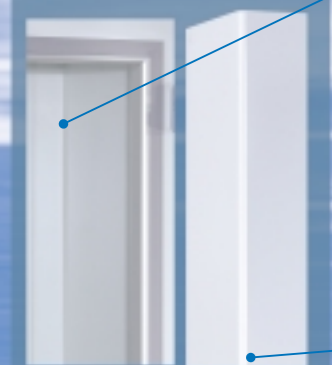


Incastro maschio-femmina con gancio ad eccentrico e speciali guarnizioni per consentire un facile montaggio, senza dispersioni termiche
Tongue-and-groove dry joint with cam locks and special sealing strips, to allow a very easy assembly without thermal dispersion

Nut-und-Feder-Panelverbindung mit Exzenterverschluss und Dichtungstreifen, für einfache Montage, ohne Kälteverlust



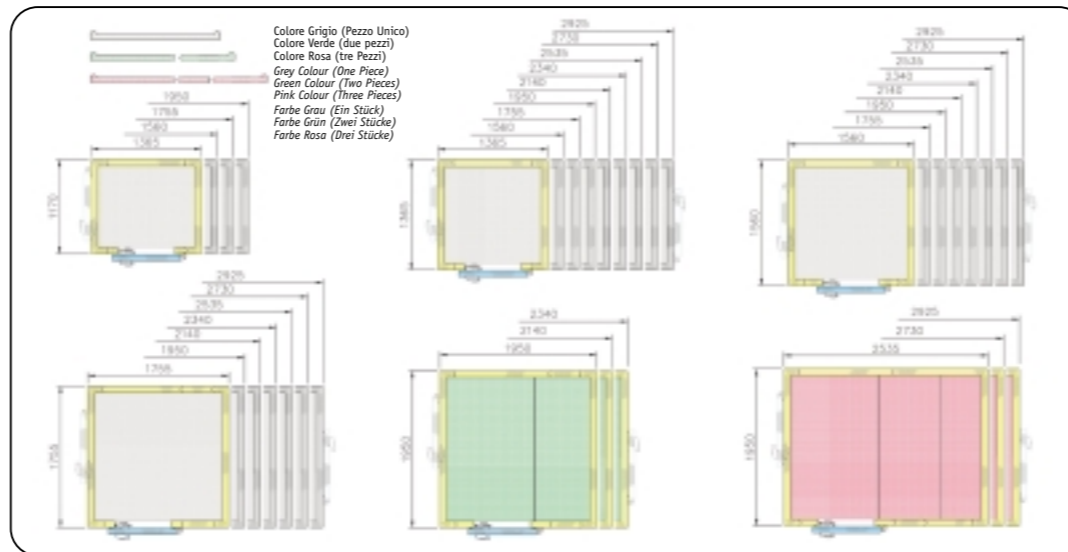
Minicelle con scaffalatura inox
Mini-coldrooms with stainless steel shelving
Minizellen mit Edelstahl-Regale



Angolo monolitico con angoli esterni ed interni arrotondati, come previsto dalle norme igienico-sanitarie

Compact corner panel with internal and external rounded finish, in compliance with the health and sanitary rules

Eckpaneel aus einem Stück, Außen- und Innenecken abgerundet, entsprechend den Hygienevorschriften



MOD.	OUTSIDE DIMENSIONS			VOL int	TN		BT	
	A x B x H	mc	-2°/+10°C		-10°/+20°C	-2°/+10°C	-10°/+20°C	
01	1170 x 1365 x 2200	2.48	TN-065	BT-120				
02	x 1560 x 2200	2.88	TN-065	BT-120				
03	x 1755 x 2200	3.24	TN-065	BT-120				
04	x 1950 x 2200	3.69	TN-065	BT-120				
05	1365 x 1365 x 2200	2.96	TN-065	BT-120				
06	x 1560 x 2200	3.44	TN-065	BT-120				
07	x 1755 x 2200	3.92	TN-065	BT-120				
08	x 1950 x 2200	4.40	TN-065	BT-120				
09	x 2145 x 2200	4.88	TN-065	BT-120				
10	x 2340 x 2200	5.36	TN-065	BT-120				
11	x 2535 x 2200	5.84	TN-065	BT-170				
12	x 2730 x 2200	6.32	TN-065	BT-170				
13	x 2925 x 2200	6.80	TN-105	BT-170				
14	1560 x 1560 x 2200	4.00	TN-065	BT-120				
15	x 1755 x 2200	4.56	TN-065	BT-120				
16	x 1950 x 2200	5.11	TN-065	BT-120				
17	x 2145 x 2200	5.67	TN-065	BT-170				
18	x 2340 x 2200	6.23	TN-065	BT-170				
19	x 2535 x 2200	6.78	TN-105	BT-170				
20	x 2730 x 2200	7.34	TN-105	BT-170				
21	x 2925 x 2200	7.90	TN-105	BT-170				
22	1755 x 1755 x 2200	5.19	TN-065	BT-120				
23	x 1950 x 2200	5.82	TN-065	BT-170				
24	x 2145 x 2200	6.46	TN-065	BT-170				
25	x 2340 x 2200	7.09	TN-105	BT-170				
26	x 2535 x 2200	7.73	TN-105	BT-170				
27	x 2730 x 2200	8.36	TN-105	BT-170				
28	x 2925 x 2200	9.00	TN-105	BT-170				
29	1950 x 1950 x 2200	6.54	TN-105	BT-170				
30	x 2145 x 2200	7.25	TN-105	BT-170				
31	x 2340 x 2200	7.96	TN-105	BT-170				
32	x 2535 x 2200	8.67	TN-105	BT-170				
33	x 2730 x 2200	9.38	TN-105	BT-170				
34	x 2925 x 2200	10.10	TN-105	BT-170				
35	1170 x 1365 x 2400	2.73	TN-065	BT-120				
36	x 1560 x 2400	3.17	TN-065	BT-120				
37	x 1755 x 2400	3.61	TN-065	BT-120				
38	x 1950 x 2400	4.05	TN-065	BT-120				
39	1365 x 1365 x 2400	3.25	TN-065	BT-120				
40	x 1560 x 2400	3.78	TN-065	BT-120				
41	x 1755 x 2400	4.30	TN-065	BT-120				
42	x 1950 x 2400	4.83	TN-065	BT-120				
43	x 2145 x 2400	5.36	TN-065	BT-120				
44	x 2340 x 2400	5.88	TN-065	BT-170				
45	x 2535 x 2400	6.41	TN-065	BT-170				
46	x 2730 x 2400	6.94	TN-105	BT-170				
47	x 2925 x 2400	7.46	TN-105	BT-170				
48	1560 x 1560 x 2400	4.39	TN-065	BT-120				
49	x 1755 x 2400	5.00	TN-065	BT-120				
50	x 1950 x 2400	5.61	TN-065	BT-170				
51	x 2145 x 2400	6.22	TN-065	BT-170				
52	x 2340 x 2400	6.84	TN-105	BT-170				
53	x 2535 x 2400	7.45	TN-105	BT-170				
54	x 2730 x 2400	8.06	TN-105	BT-170				
55	x 2925 x 2400	8.67	TN-105	BT-170				
56	1755 x 1755 x 2400	5.70	TN-065	BT-170				
57	x 1950 x 2400	6.39	TN-065	BT-170				
58	x 2145 x 2400	7.09	TN-105	BT-170				
59	x 2340 x 2400	7.79	TN-105	BT-170				
60	x 2535 x 2400	8.48	TN-105	BT-170				
61	x 2730 x 2400	9.18	TN-105	BT-170				
62	x 2925 x 2400	9.88	TN-105	BT-170				
63	1950 x 1950 x 2400	7.18	TN-105	BT-170				
64	x 2145 x 2400	7.96	TN-105	BT-170				
65	x 2340 x 2400	8.74	TN-105	BT-170				
66	x 2535 x 2400	9.52	TN-105	BT-170				
67	x 2730 x 2400	10.30	TN-105	BT-170				
68	x 2925 x 2400	11.08	TN-105	BT-170				

Basamento e Soffitto in Pezzo Unico fino a 1755mm di Larghezza

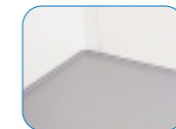
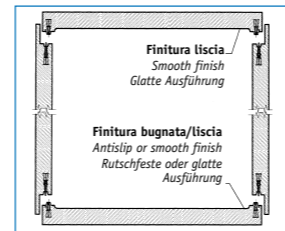
Vantaggi:
• Maggior Isolamento
• Velocità di Montaggio
• Facile Pulizia

Floor and Ceiling as One Piece to Width 1755mm

Advantages:
• Better Insulation
• Quicker Assembly
• Easier Cleaning

Boden und Decke aus einem Stück, bis Breite 1755mm

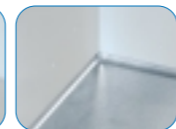
Vorteile:
• Bessere Wärmedämmung
• Schnellere Montage
• Einfachere Reinigung



Lamiera - PVC-coated steel - PVC-beschichtetes Stahlblech



Vetroresina - Fibreglass - GFK-Polyester



Iner + Stainless steel - Edelstahl

Pavimento a vasca, con raccordi a parete arrotondati che evitano l'impiego di profili di finitura interna
Hygienic fully radiused floor joints, making the use of internal finish profiles unnecessary
Boden als Wanne ausgeformt, mit abgerundeten Wandverbindungen, welche den Einsatz von Steckprofilen unnötig machen

IT - GB - TE - 30-06-2010 L'azienda si riserva di modificare i dati e le caratteristiche tecniche in ogni momento senza necessità di preavviso



FRIGOR-BOX®

Via Prandi, 11 - zona ind. PRATISSOLO - 42019 SCANDIANO (RE) - Italy
Tel. +39/0522/851711 - Fax +39/0522/982941 - www.frigorbox.it - E-mail: frigorbox@frigorbox.it

MINICELLE TOP
MINI-COLDRoomS TOP
MINIZELLEN TOP

MINICELLE



FRIGOR-BOX®



Minicelle prefabbricate di dimensioni contenute, realizzate con pannelli modulari tipo sandwich, di facile e rapido assemblaggio, con bloccaggio all'interno della cella mediante ganci ad eccentrico reversibili. Questo sistema di aggancio consente, qualora richiesto, di smontare e rimontare la cella in un altro posto.

Isolamento in poliuretano espanso autoestinguento, iniettato tra i supporti ad una densità media di 40 Kg/m³.

• Spessore dei pannelli 80 mm (sia nella versione BT che TN).

• Elementi di parete e soffitto rivestiti sui due lati, a scelta, in:

a) **Vetroresina bianca liscia** alimentare ed autoestinguento, particolarmente consigliata per la conservazione di prodotti a natura aggressiva quali formaggi, prodotti ittici e carni fresche;

b) **Lamiera zincopreverniciata** bianca liscia, indicata per le restanti applicazioni.

• Due altezze esterne disponibili: 2200 e 2400 mm

• Pavimento con piano di calpestio antiscivolo a norme antinfortunistiche, realizzato in:

a) Vetroresina alimentare bianca (nella versione vetroresina);

b) Lamiera plastificata grigia (nella versione zincopreverniciata);

c) Acciaio inox AISI 304 (a richiesta).

• Speciale struttura a vasca con anelli interni arrotondati a norme sanitarie, nelle unioni pareti/pavimento e pareti/soffitto.

• Porta a battuta tipo girevole verso l'esterno, montata su pannello vano porta, completa di maniglia con sblocco interno di sicurezza e chiusura a chiave. Luce netta mm 700x1850h.

• Cavo termico anticondensa 220V nella versione BT.



Prefabricated small sized coldrooms, made of sandwiched panels, easy and fast to be assembled from inside the coldroom through reversible cam locks. This locking system makes it possible to dismantle the mini-coldroom and re-assemble it elsewhere whenever required. Insulation by self-extinguishing polyurethane foam, injected between the claddings at an average density of 40 Kg/m³.

• Panel thickness 80 mm, (both for negative temperature BT and for positive temperature TN).

• Wall and ceiling panels are clad on both sides, on request, of:

a) White smooth fibreglass composite, foodsafe and self-extinguishing, specially recommended for the conservation of aggressive products by nature, such as cheese, fish and fresh meat;

b) White smooth prepainted galvanized steel, suitable for all other applications.

• External height available: 2200 and 2400 mm.

• Antislip upper floor finish, according to health and safety rules, made of:

a) White foodsafe fibreglass (model in fibreglass);

b) Grey PVC-coated galvanized steel (model in prepainted galvanized steel);

c) Stainless steel AISI 304 (on request).

• Hygienic, fully radiused floor and ceiling joints, in compliance with the sanitary rules.

• Door revolving on hinges, with lower rebate, pre-assembled on wall panel, complete with door handle, key-locking system and safety internal release. Clear opening 700x1850h mm.

• Electrical trace heater 220V in models for negative temperature BT.



Vorgefertigte Minizelle mit kompakten Abmessungen, Wände mit glatten Oberflächen, Sandwichverfahren, für schnelle Montage. Verbindung der Paneele mit Exzenterverschlüssen. Vorteil dieses System ist die Möglichkeit, die Zelle jederzeit wieder zu demontieren und an anderer Stelle aufbauen zu können.

Isolierung in PU-Schaum, selbstlöschend, injektionsverfahren, Dichte ca. 40 Kg/m³.

• Stärke der Paneele, für TN und BT, 80 mm.

• Paneelverkleidung für Wand und Decke, auf beiden Seiten, nach Wahl:

a) GFK-Polyester, weiß, lebensmittelgerecht und selbstlöschend, besonders geeignet für die Lagerung aggressiver Produkte wie Käse, Fisch und frischem Fleisch;

b) Stahlblech, galvanisiert und weiß-lackiert, für alle anderen Anwendungen.

• Zwei Außenhöhen verfügbar: 2200 und 2400 mm.

• Boden mit rutschfester Oberfläche nach Unfallverhütungsvorschriften, ausgeführt in:

a) GFK-Polyester, weiß (bei der Zellenversion in GFK-Polyester);

b) Stahlblech PVC-beschichtet, grau (in der Zellenversion Stahlblech);

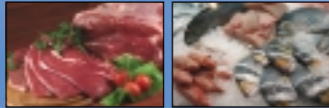
c) Auf Wunsch in Edelstahl AISI 304.

• Ausführung als Wanne, Ecken in der Zelle abgerundet, nach Hygienevorschriften, zum Boden und zur Decke.

• Drehtür, nach außen öffnend, vormontiert auf Türpanel, komplett mit Griff und Notöffner, sowie abschließbar. Lichte Maße 700 x 1850h mm.

• Türheizung 220 V bei Version BT.

MINIZELLEN TOP MINI-COLDRoomS TOP MINICELLE TOP



Minicella in Vetroresina, ideale per locali aggressivi

Mini-coldroom in Fibreglass, ideal for aggressive environments

Minizelle in GFK-Polyester, ideal für aggressive Räume



Niente ruggine

Rust free

Rostfrei



Igiene
Hygiene
Hygiene

Minicella in Lamiera H 2400 mm
Mini-coldroom in Prepainted Steel H 2400 mm
Minizelle in lackiertem Stahlblech H 2400mm



Maniglia con sblocco interno e chiusura a chiave

Handle with internal release and key lock

Türgriff mit Schloß und Notöffner



Maniglia di sblocco interno e chiusura a chiave

Internal release handle and key lock

Innennotöffner mit Schloß



Scaffalatura prefabbricata inox

Modular shelving in stainless steel

Vorgefertigte Regale in Edelstahl



Scaffalatura prefabbricata in All Plast

Modular shelving in aluminium and plastic

Vorgefertigte Regale in Aluminium und Kunststoff



Quadro comando precablatto con ampio Display

Prewired control panel with wide Display

Verkabelte Schalttafel mit großem Display



Motocondensante a distanza

Remote condensing unit

Kondensatoreinheit einer Splitanlage



Risparmio energetico

Energy saving

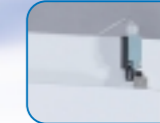
Energieeinsparung



Impianto frigorifero Uni-System a soffitto

Uni-System ceiling mounted refrigeration unit

Uni-System-Kälteaggregat zur Deckenmontage



Interruttore micro porta di serie

Standard door switch

Standard-Türschalter



Impianto frigorifero Uni-System accavallato

Uni-System straddle-type refrigeration unit

Uni-System Huckepack-Kälteaggregat



Impianto frigorifero Uni-System a parete, senza sporgenza in cella

Uni-System wall mounted refrigeration unit, with limited encumbrance inside the coldroom

Uni-System-Kälteaggregat zur Wandmontage, ohne Störkanten in der Zelle



Minicella in Lamiera H 2200 mm

Mini-coldroom in Prepainted Steel H 2200 mm

Minizelle in lackiertem Stahlblech H 2200mm

Minicella con unità frigorifera a soffitto

Mini-coldroom with ceiling mounted refrigeration unit

Minizelle mit Deckenaggregat

Minicella con unità frigorifera a parete

Mini-coldroom with wall mounted refrigeration unit

Minizelle mit Wandaggregat